



CULGAITH PARISH COMMUNITY LED ACTION PLAN 2013 - 2017

Serving Blencarn, Culgaith, Kirkland and Skirwith



The Community Led Plan Steering Group

Val Brown, Mike Graham, Lynn Harrison, Jill Hay, Andy King
Sue Smith, Vera Stockdale, Laura Wilson

Acknowledgements

The Steering Group would like to thank Oliver Shimell and Deborah Garnett of Eden District Council, Carl Glynn and Hellen Aitken of ACT, Culgaith Parish Council, Geoff Anderson, Sandy Urquhart and all the local community groups and members of the community.

Financial Support

The Community Led Plan was made possible by support from Culgaith Parish Council, Eden District Council and ACT

Further Information

The Community Action Plan and Summary are available on the Culgaith village website <http://www.culgaith.org.uk/> and the ACT website <http://www.cumbriaaction.org.uk/>

CULGAITH PARISH
COMMUNITY LED ACTION
PLAN 2013-2017

Serving Blencarn, Culgaith,
Kirkland and Skirwith

January 2013

CONTENTS

Chairman's Introduction	1
Main Outcomes of the Parish Plan 2004-2009	2
Background to Culgaith Parish.....	3
Survey Results and Analysis.....	5
Transport and Access	5
Community Cohesion and Involvement	6
Education and Life-Long Learning	7
Culture and Leisure	7
Economic Well-being.....	8
Health and Social Well Being	8
Environment.....	9
Housing.....	11
Community Safety	11
Business	12
Introduction to the Action Plan.....	12
Action Plan Table 2013 - 2017	13
Appendix.....	16

Chairman's Introduction

After an amazing summer of sport and cultural activities in 2012 we are reminded what can be achieved by individuals working collectively to a long term plan over time. Whether it's the GB cycling team and it's mercurial leader, Dave Brailsford stating they'd win the tour and the Olympics a few years ago and then doing precisely that or Mo Farah aiming high and working hard for years away from his family to then claim two gold medals at the Olympics the evidence is clear: If you want to achieve something significant you need an ambitious, inspiring vision and a plan backed up with hard work and tenacity.

Following on from the previous parish plan and the outcomes achieved (see below) the intention of the revised plan is to build on this success and share the refreshed vision of the community with various stakeholders that has been formed following a series of consultation exercises. We sincerely hope you will want to get involved in some way, no matter how seemingly small, to help to further improve our stunningly beautiful parish.

The steering group has set out to agree realistic actions and targets against which local people can review progress and decide whether things have improved over time. If you feel we've missed something or misunderstood or just want to get involved in a discussion about the plan please let us know. We are simply a group of local people like yourselves seeking to work together to address the issues raised.

The Community Action Plan is not a one-off, and will be reviewed and developed over time. It will ultimately be deemed successful only if it captures the imagination of the people it attempts to serve - the local community – and inspires them to get involved as volunteers. So please consider how you could possibly contribute to your area and you might even have some fun along the way!

Andy King
Chair Steering Group
Culgaith Parish Community Led Plan

January 2013

Main Outcomes of the Parish Plan 2004-2009

HOUSING

Issue: Clear need for affordable housing identified but Culgaith did not meet Eden District Council's criteria for housing development.

Outcome: Following extensive lobbying from the Parish Council Culgaith is now designated as a Local Service Centre under EDC's Core Strategy. This has resulted in one or two new houses being built but affordable housing is still an issue. This was borne out in the Cumbria Rural Housing Trust survey conducted in 2010.

TRANSPORT

Issues: Lack of knowledge of Fellrunner services and other community services such as voluntary car schemes.

Outcome: Fellrunner timetables supplied to all households. New transport policy from Cumbria County Council ensured that Culgaith was identified as an "individual settlement category" with access to Rural Wheels.

HIGHWAYS and FOOTPATHS

Issues: Speeding, winter gritting, HGVs, etc.

Outcome: Lots of discussion with Cumbria County Council but no further forward, although more grit bins were provided.

Issue: Parish paths difficult to use.

Outcome: Funding from the Parish Paths Initiative funded new footpath signs and gates.

ENVIRONMENT

Issues: Complaints about the Recycling Centres being full.

Outcome: Culgaith Recycling Centre upgraded, plastic recycling facility added.

Issue: Street lights defective for lengthy periods.

Outcome: Footway Lighting Renewal undertaken in 2006

Issue: Conflicting views on the use and maintenance of the Tarn.

Outcome: Working with The Friends of Lake District the Parish Council organised a community workshop resulting in the formation of the Guardians of Culgaith Tarn who now manage the Tarn for the benefit of the community.

COMMUNICATION

Issue: Residents felt poorly informed on village activities.

Outcome: Information leaflets on a range of activities distributed to each household. New notice boards bought for each village. In 2007 Parish Council started to sponsor the village website. Parish Council meetings reported in the Cumberland and Westmorland Herald and Memo. Annual Report distributed to all households.

BUSINESS

Issue: Lack of Broadband

Outcome: Results of Parish Plan survey helped to get the Culgaith telephone exchange upgraded for broadband.

COMMUNITY FACILITIES

Issues: Wide variety of needs for improved social activities identified. It was recognised that this was dependent on improved facilities for village halls. Concern about the state of Culgaith Recreation Ground and the open air swimming pool

Outcome: The Parish Plan has been used to support funding requests by the village halls and recreation ground from both Cumbria County Council and Eden District Council.

This has resulted in the roof being strengthened at Skirwith Village Hall, new PV panels, new ground source heat pump and better lighting.

Culgaith Victoria Institute has had funding to replace guttering, take down leaky chimneys, decorate the hall, new carpet and the building of a disabled toilet.

Kirkland and Blencarn Recreation Room has had new matting for the play area.

At Culgaith Recreation Ground there has been a new ball wall, tarmac has replaced grass on the tennis courts, new play equipment installed and after consultation the open air swimming pool filled in.

The Parish Council facilitated a briefing on community cafes which led to the start-up of the weekly VIC Café at Culgaith.

Background to Culgaith Parish

Culgaith Parish lies in the Eden Valley, one of the most sparsely populated areas in England. It comprises 4 communities – Culgaith, Skirwith, Blencarn and the hamlet of Kirkland. It is bounded on the West by the River Eden, to the North by Ousby and Langwathby, to the South by Crowdundle Beck. To the East lies Cross Fell, the highest point on the Pennines and part of the parish. According to the 2001 Census it had a population of 721 made up of 369 males and 352 females.

The Parish does not have any shops, although the Garden Centre in Culgaith does sell newspapers, fresh vegetables, bread and some groceries. A weekly mobile Post Office visits Culgaith. The railway station closed some years ago and the nearest access to the service is at Langwathby some 4 to 5 miles away. There are no public transport facilities. However, the Fellrunner Village Bus Company does serve all the villages.

Culgaith is the largest village and includes Culgaith C. of E. Primary School whose catchment area includes all the villages in the Parish. It has a church, All Saints, and a Methodist Chapel. The village hall, the Culgaith Victoria Institute, hosts the weekly VIC Community Café. There is also a Recycling Centre and Recreation Ground with children's play facilities. It has two village greens - The Tarn of 4 acres managed by the Guardians of Culgaith Tarn and the Flodder of ¼ acre. A number of farms, home based businesses and a pub - The Black Swan. One of the largest businesses within the parish is HazelDene Garden Centre which includes a small shop and a restaurant – Mrs Millers.

Skirwith is the second largest community and was designated a conservation area in 2002. It includes St John the Evangelist Church and Skirwith Village Hall. It has a large village green of some 5 ½ acres and associated children's play facilities. A number of farms and home based business and a small Recycling Centre.

Blencarn is the third largest community and includes a village hall Blencarn and Kirkland Recreation Rooms with children's play facilities in the grounds. A large village green of some 2 ½ acres owned by the Lord of Manor but managed by the Parish Council. There are a number of farms, a small Recycling Centre, and a man made Fly Fishing lake. The Rigg of some 33 acres over which commoners exercise grazing rights. Blencarn Fell is within the North Pennines Area of Outstanding Natural Beauty. (AONB)

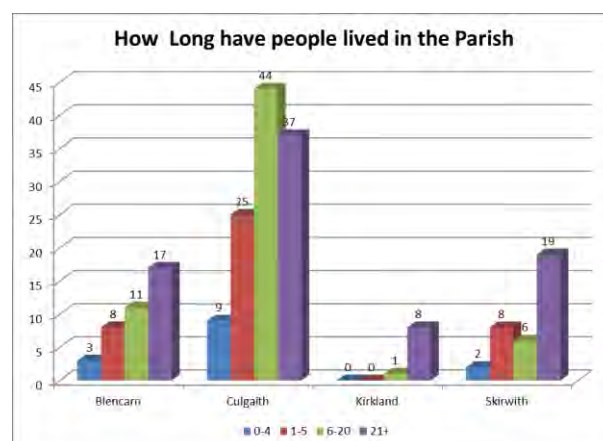
Kirkland is a small hamlet community within North Pennines AONB. It includes St Lawrence's Church and a village green of some 1 ½ acres. A number of farms and home based business. The hamlet is dominated by Cross Fell a Site of Special Scientific Interest (SSSI).

Changes since the 2004 Parish Plan

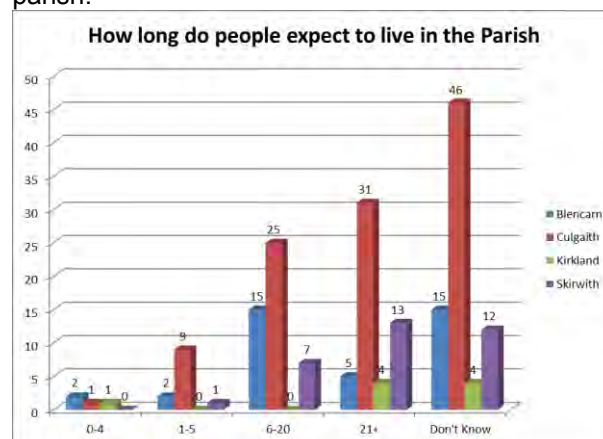
Since the last Parish Plan was drawn up in 2004 there have been a number of changes with new housing developments at Otters Holt in Culgaith and Kirkhill in Blencarn. The Post Office at Blencarn has closed. Broadband and mobile phone coverage has become much more important. Under Eden District Council Core Strategy Culgaith village has been designated a Local Service Centre which should allow more houses to be built.

Stability of the community

The survey asked how long people had lived in the parish. The figures below indicate a very stable population.



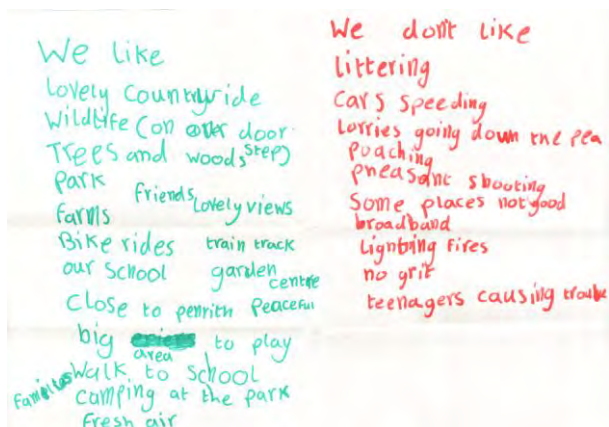
Also how long they expected to stay in the parish.



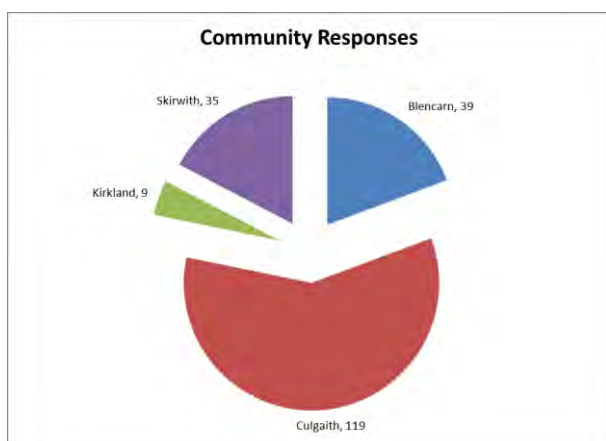
Consultation Process

In 2011 Culgaith Parish Council agreed to update its Parish Plan of 2004-2009. Adopting the approach of a Community Led Plan it invited people from local organisations across the Parish to join a Steering Group. Representatives came from Culgaith, Blencarn and Skirwith. Advice was received from Eden District Council's Community Officer and ACT (ACTion with Communities in Cumbria).

Regular updates on the process were published in the Memo, a monthly newsletter distributed to every household. A household survey was undertaken in May 2011. In addition, there were public consultations at the Annual Parish meeting in Culgaith and the Blencarn Jubilee event. The children at Culgaith C of E School were asked for their views which are summarised below.



Over 370 surveys were distributed and 202 were returned completed giving a response rate of 54%.

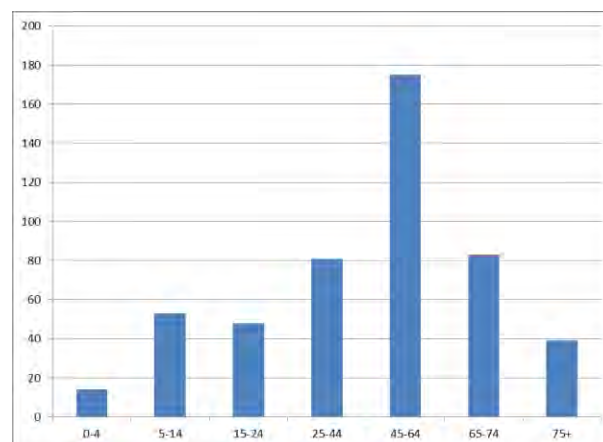


The draft Action Plans were presented to the local community through public forums at Blencarn, Culgaith and Skirwith and feedback incorporated into the plan. The meeting at Culgaith which focussed on affordable housing was attended by

Rory Stewart M.P. and the Cumbria Rural Housing Trust.

Age Profile of Respondents

The chart below highlights the family age range of the households that completed the survey.



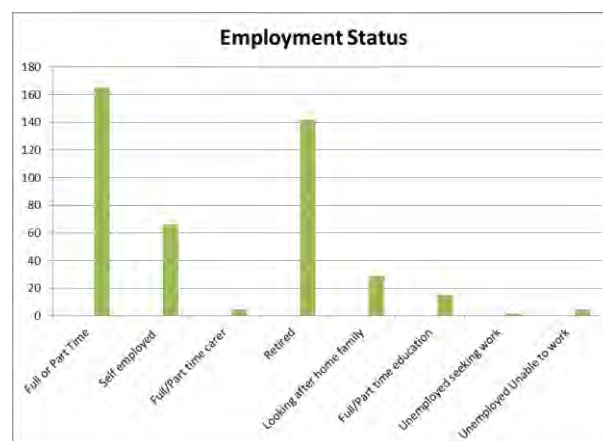
According to the Office of National Statistics in its 2010 Based Populations Projections for the Eden Valley there will be an increase in over 65s by 2035. This has implications for housing and transport.

ONS 2010 Populations Projections for Eden

Age	2010	2025	2035
0-15	9K	9K	8K
16-64	32K	30K	29K
65+	11K	16K	20K
Total	52K	55K	56K

Employment Status

The chart below sets out the employment status of the adults i.e. over 18 years that completed the survey.



Survey Results and Analysis

The results from the survey plus other feedback have been grouped according to Quality of Life themes – Transport and Access; Community Cohesion & Involvement; Education and Life-Long Learning; Culture and Leisure; Economic Well-being; Health and Social Wellbeing; Environment; Housing; Community Safety; plus a Business Section.

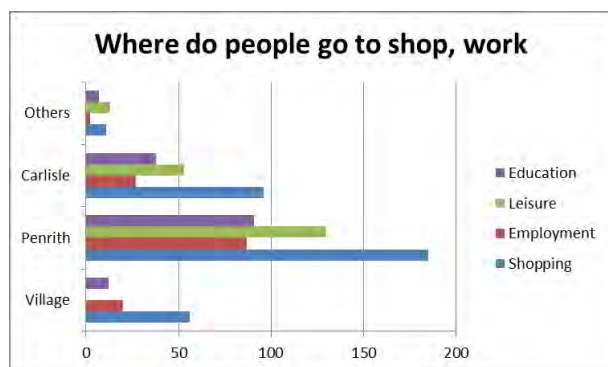
Transport and Access

Access

There is no public transport in the Parish but it is served by the Fellrunner Bus Company which operates from Culgaith, Blencarn and Skirwith 5 days a week to Penrith and once a week to Carlisle. Passengers from Kirkland need to request the bus. The survey showed that most people knew of the Fellrunner but the majority did not use it preferring to use their own cars. Rural Wheels and the Voluntary Car Scheme were much less known.

47% of people said they would consider using public transport if it was available. But for most people it would only be 2 or 3 times a week to Penrith which probably makes any service unviable.

As in the 2004 survey most people shop and or work in Penrith. They also go there for education.



Parking

Parking is not seen as a big issue with 86% of people parking in their private space. A small group of about 16% did raise issues about parking on village greens and around the Black Swan when it is busy. At Skirwith the problem centres on not enough space when the church or village hall is in use. Consideration needs to be given to the provision of parking at Blencarn for tourists and walkers.

School Transport

Only 9 people were affected or would be in future by the changes introduced from 1st September 2012 to charge students over the age of 16 £350 for school transport.

Traffic Issues

The biggest problem encountered by the Parish was lack of winter gritting. Only the B6412 from Langwathby through Culgaith is gritted as a Priority 2 route. All the villages have encountered problems in the past few years causing some people to take time off work. There was also concern about the lack of gritting of the school bus routes.

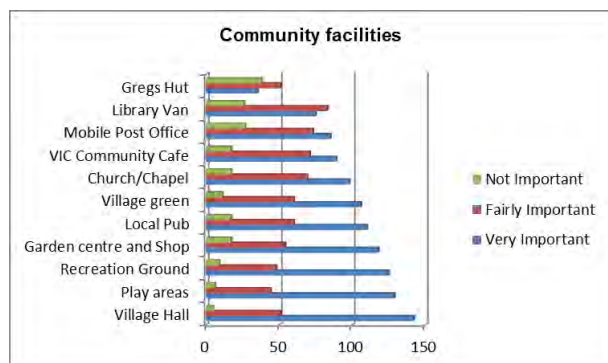
Traffic Issues	
Winter Gritting	113
Traffic travelling too fast	78
Potholes	54
HGV Traffic	52
Dirty Roads	41
Highways Drainage/Flooding	31
Motorbike riding	21
Lack of gully cleaning	20
Poor street lighting	18
Uneven pavements	17
Traffic Noise	11
Low flying aircraft	9
Lack of cycle paths	8
River and or beck flooding	8
Any other	8
Lack of safe places to cross roads	5

Amongst other issues raised were speeding on the Culgaith to Langwathby road and through Skirwith. Potholes described by one person as too many to list. Motorbikes particularly on the A686. Some people wanted more street lighting and others wanted it taken out. HGV were seen as a problem particularly down The Pea in Culgaith and causing damage to Skirwith Village Green. One area of concern is the junction at the top of The Pea which is very narrow.

Flooding was identified as a problem at Millrigg in Culgaith, at Broats Farm between Blencarn and Skirwith, at Howrigg Blencarn, and by Flosch in Kirkland. Also along the Skirwith to Langwathby Road where the verges have been damaged by heavy traffic.

Community Cohesion and Involvement

The survey asked for opinions on the importance of community facilities and asked if there was anything that should be preserved or provided. The reasons given for not using a facility were generally that people were working. Some suggestions were made for improving the facilities.



Village Halls

The three village halls in Culgaith, Skirwith and Blencarn were clearly important to the community. All are run and managed by their own Committees. Skirwith Village Hall has regular events including concerts and a monthly soup lunch. It is currently undergoing a major refurbishment to improve the heating and insulation. Blencarn has village events and talks centred on the hall. At Culgaith Victoria Institute the Brownies meet weekly during term time. The VIC Community Café meets every Thursday afternoon in Culgaith and from the survey is obviously valued. There was a feeling from some that Culgaith Victoria Institute needed to be modernised.

Play areas and Recreation Ground

In Culgaith there is a play area within the Recreation Ground. In the past few years the equipment has been upgraded, a ball wall has been erected and the tennis courts made hard standing. New equipment has been installed since the survey was undertaken which may go to answering the request for upgrade. The youngsters would like a mini BMX jumps and burns track and skate park. The Cricket Club also plays at the Culgaith Ground and some people are concerned that the ground should be preserved for everyone and not just for one sport. Also suggested were barriers to stop children running out on to the road.

The Skirwith Play area is on Skirwith Village Green, close to the beck. The issues raised relate to the state of the equipment i.e. slippery tiles under the swings and the state of the area which is managed as part of the village green. Some people wanted the grass cut more frequently.

Blencarn has a small play area adjacent to the village hall. Youngsters asked for a bigger play area with better equipment.

Other important facilities

The Garden Centre has developed since the last survey in 2004 and now offers newspapers, fresh fruit and vegetables, bread and some groceries. Although some people thought that having a shop in their village would be nice.

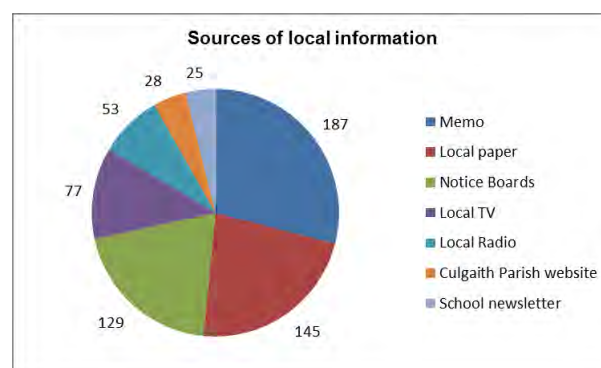
The only pub in the parish, The Black Swan in Culgaith was considered important. One person did ask for a pub in Kirkland. Village greens were valued and more information on this later.

Less important to the community

There are churches in Culgaith, Skirwith and Kirkland and a Methodist Chapel in Culgaith. Culgaith church has been revitalised recently with a monthly service for children but on the whole the churches are not well supported. The mobile post office van only visits Culgaith and so has limited value to the rest of the parish, although it provides a vital service particularly to the older members of the community. The mobile Library van's visits are becoming less and less frequent. Amongst walkers Greg's Hut, a bothy on Cross Fell, was valued.

Local Information

The best places to disseminate local information The Memo and the Cumberland and Westmorland Herald as shown below.



Education and Life-Long Learning

Until 2011 Culgaith C. of E. School was only one of two first schools in the County. In July of that year Cumbria County Council agreed that it should become a full primary school. Full implementation will have been achieved by September 2013. The School's catchment area includes all the villages within the parish.

The School offers part time nursery education, a breakfast club and after school activities. The table below shows how important the school is to the community.

	Important	Not Important	Don't know
Primary School	168	2	10
Nursery	138	4	37
Breakfast Club	63	15	95
After School facilities	100	7	65

The majority of respondents did not use the school which is a reflection on the number of older people in the community. However, the school is very much seen as acting as a community hub. There was a strong sense that children should be taught where they live and that it helps attract young families to the villages.

Similar reasons were given for supporting the nursery class. Breakfast Club was seen as useful for working parents. After school facilities were seen as important particularly to encourage children to participate in sports and other activities within the community as they got older. There was appreciation expressed for the interactions between the school and the VIC Café such as the Christmas concert.

On childcare facilities the majority of respondents do not need them. Of those that do 78% thought they were adequate.

Culture and Leisure

None of the village halls in Blencarn, Culgaith and Skirwith currently offer evening or daytime classes.

A number of further activities were identified. At Blencarn suggestions included scouts, reading groups, coffee mornings, yoga and other fitness classes. In Culgaith scouts were also requested plus youth club, yoga and other fitness classes, indoor swimming pool, regular quiz nights and film shows. The only request from Kirkland was for a pub. At Skirwith suggestions included film club, table tennis, badminton, snooker, yoga and youth group.

16% of respondents showed an interest in running activities. 45% supported more activities for young people in the area. These included youth groups, scouts, guides, judo, football and rugby training, and tennis.

The responses from under 18s through the survey and from the Blencarn Jubilee and Culgaith Summer Celebration were as follows-

Blencarn - A better park and a bigger play area with more equipment.

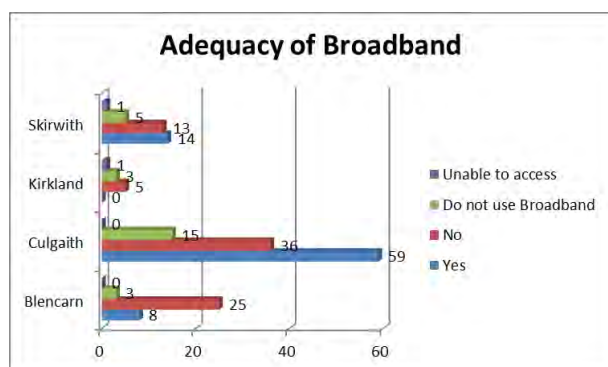
Culgaith - Better football goals/area on grass. Very much a cricket club really, Skate Park, BMX track, Youth Club.

Kirkland - A Bus shelter, Better Broadband, Youth Club.

Economic Well-being

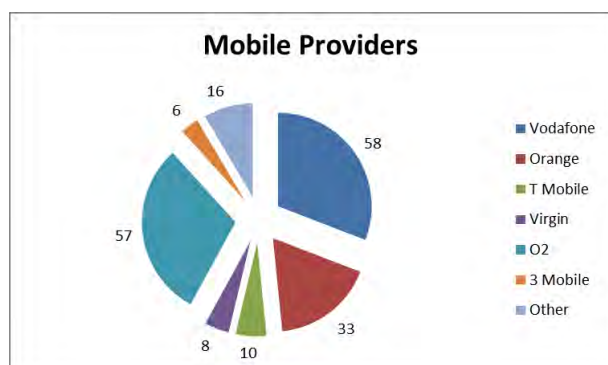
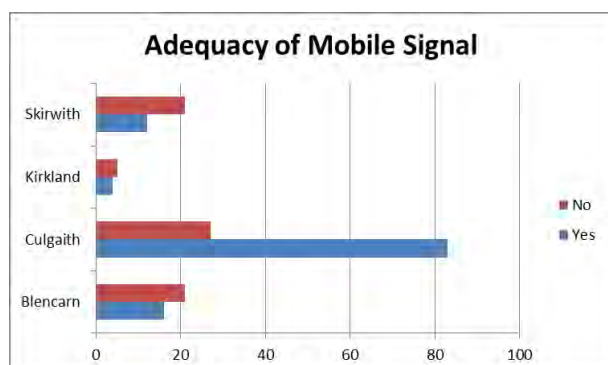
Broadband

As expected Broadband speed varies greatly with Culgaith being the best off and Kirkland the worst. Almost nobody was prepared to pay to access the internet via a cyber café located in village halls. 150 respondents were using broadband for personal use, 81 for business use, 26 did not use broadband and 5 could not access it.



Mobile coverage

Mobile coverage was also patchy and did not seem to be related to a specific provider.



Telephone numbers

One issue raised in recent years has been the problem of mobile numbers recognising the 5 figure telephone numbers. 156 out of 194 respondents have 5 figure numbers, but only 33% would like it changed to a 6 figure number.

Health and Social Well Being

Medical Services

Questions on access to GP services, hospitals and dentists showed that most people were able to get to medical services locally.

Access to medical services					
	Penrith	Temple Sowerby	Appleby	Carlisle	Others
GP	92	72	0	23	5
Dentist	137	0	23	33	8
Hospital	138	0	0	106	2

Most respondents were happy to travel to Carlisle for hospital treatment but would like to see more frequent clinics at Penrith for physiotherapy, mammograms, outpatient clinics, x-rays, and health screenings.

More health related activities were also requested. The most common being Walking groups, Yoga, Taichi, Keep Fit, and Zumba classes. With a mixture of times from during the day to evenings and weekends. Some of these are already available in both Langwathby, Melmerby and Culgaith but either they are not well known or are not available when people can go to them.

Social Services

Not many people use or need the wider social services.

	Needed	Unable to Access	N/A
Home Care	5	0	151
Respite Care	4	0	152
Day Centre	1	0	151
Occupational Therapy	5	1	152
Citizens Advice Bureau	8	1	150
Social worker	8	0	150
Other	4	0	148

Nobody wanted or needed Meals on Wheels or Adoption/Fostering services. However, a number of other social and health care facilities were identified as being needed in the area. These included Flu jabs administered in village halls, regular blood donor sessions (currently available at Penrith and Appleby), and Citizen Advice Bureau in the Doctor's Surgery at Temple Sowerby.

Environment

Village Greens

There are 5 village greens within the Parish. The Parish Council owns and manages 3 of them – the Flodder in Culgaith, Kirkland Village Green and Skirwith Village Green. It also owns the Tarn which is managed by the Guardians of Culgaith Tarn. At Blencarn the village green is owned by the Lord of the Manor but maintained by the Parish Council. In 2011/12 15.8% of the Parish Council's budget was spent on grass cutting. Of all the village greens Skirwith is the most difficult to manage because of its topography and this is reflected in the response to the question about the level of maintenance. Generally the high Don't Know responses are a reflection on the comments from non-residents about the village greens in another village.

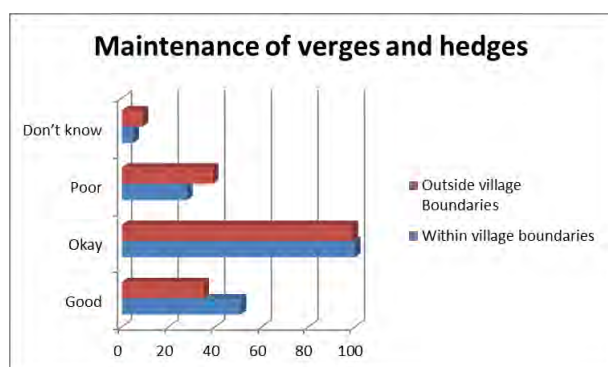
Views on maintenance of village greens

	Good	Okay	Poor	Don't Know
Flodder	34	43	3	39
Tarn	69	36	0	27
Skirwith	18	36	8	54
Blencarn	28	30	2	62
Kirkland	11	24	4	61

The main concerns raised were about parking on the Flodder and access to the houses on the other side of that green. At Skirwith there were mixed views. Most wanted to see the green cut more regularly with the nettles and brambles removed. Some suggested a wider cut area by the Beck. Others wanted to see the green left natural and did not want to disturb wildlife. More information needs to be collected from Skirwith residents about how they want the green managed in future.

Verges and Hedges

Whilst the figures show that most people think the maintenance of roadside verges and hedges was either good or okay, a number of people did raise issues particularly about the overgrown hedges. Heavy vehicles causing damage to the verges on narrow roads was also a concern.



Footpaths and Bridleways

75% of respondents had no problems with the footpaths or bridleways. In Blencarn issues raised included access to Lonning footpath, repairs to styles and fences identified in Blencarn Walks booklet not followed up. There was concern that the bridleway to Cross Fell had been resurfaced with large stone unsuitable for horses, and Quad bikes and horses churning up the paths up on the Rigg. At Kirkland lack of signage and walkers leaving gates opened was mentioned.

In Culgaith the main issues centres on dog fouling, the state of the path through Hag wood after two bad winters, cattle and horses in fields, and no footpath from the Garden Centre to Otters Holt. Overgrown and muddy footpaths were the main complaints at Skirwith plus request for more dog friendly stiles.

Recycling

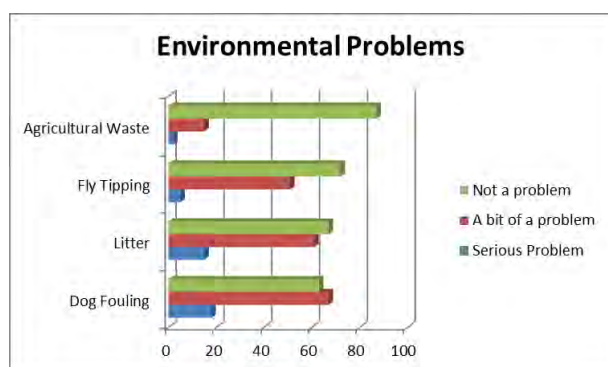
There are three recycling centres in the parish. All collect glass, aluminium, paper and textiles. In addition, the Culgaith Village Recycling Centre collects plastic. 83% felt the recycling facilities were adequate in their village although more plastic recycling was requested in Blencarn and Skirwith. The survey was undertaken before the new kerbside collection was introduced in July 2012. Under this new scheme plastic is now being collected on the doorstep, although plastic bags can only be collected at Culgaith Village Recycling Centre.



Issues that still need to be addressed include garden waste collection at Blencarn, Kirkland and Skirwith. Culgaith has green wheelie bins but the other villages do not. The garden waste skip at Skirwith is currently under threat. Polystyrene and tetra pack facilities are not currently available at the village recycling centres or through the doorstep collection.

Environmental problems

Dog fouling and litter were seen as the most serious problems. A lot of detailed information was given about specific problems. Culgaith, Skirwith and Blencarn are subject to 30 mph speed restrictions and therefore Dog Control Orders which state that dog owners must pick up after their dogs. There is very little that can be done outside these areas. Culgaith does have an annual litter pick and 75 respondents said they would support a litter pick.



Heating

None of the villages have gas and so rely on oil, electricity, calor gas, coal or wood for their heating and cooking. 66% of respondents relied on oil and 75% would consider joining a bulk purchase scheme to reduce costs.

Green Issues

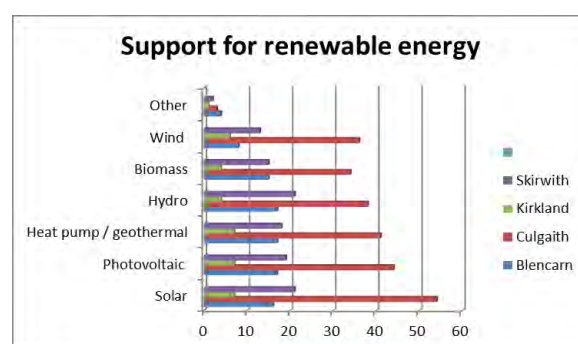
The survey asked how much support there was for a wide range of green issues.

	Blencarn	Culgaith	Kirkland	Skirwith
Red squirrel preservation scheme	17	51	6	25
Litter pick	11	41	5	18
Wildlife friendly area	14	38	2	15
Walking Group	9	31	2	9
Allotment project	8	28	2	8
Village in bloom competition	6	30	2	6
Public footpath group	7	24	3	7
Garden club	8	22	1	4
Lift/Car share scheme	6	21	1	5
Garden share scheme	5	6	1	3

There is an active garden club in Melmerby and many of the residents of the Parish are members. There is also a monthly Walking Group in Culgaith and Walking for Health project which is accredited and insured by Natural England and supported by the Department of Health. The latter is run every Thursday afternoon and includes walks starting from across the parish plus Langwathby and Temple Sowerby.

Renewable Energy

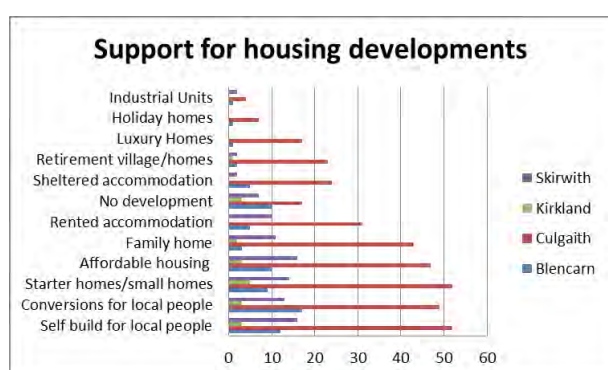
There has been increased interest in renewable energy over the past few years. The survey asked which small scale community owned renewable energy schemes would people support. The most supported were solar, photovoltaic and geothermal.



Housing

About 19% of respondents had concerns about planning developments in their village. Of particular concern in Blencarn was the Kirkhill development which many considered as too exclusive and expensive. In Culgaith the issue centred on the lack of affordable housing and at Skirwith there were mixed views about policy issues related to future developments.

People were also asked about the type of housing they would support in their area. Around 6% wanted no development at all. The most supported future development was affordable housing, starter/small homes, and conversions and self builds for local people.



The survey also asked about the need for housing. In answer to the question will anyone in your household be in need of additional housing in the next 5 years, 22 out of 166 respondents said yes. The most common request being for starter/affordable homes.

Other needs identified included family homes, houses for farm workers and pensioners bungalows. The Housing Survey conducted by Cumbria Rural Housing Trust in March 2010 also identified the need for 2/3 bedroom rented accommodation. It also mentioned that a number of over 60s are living in unsuitable housing but there appears to be a lack of suitable housing for them in the Parish.

As a Local Service Centre Culgaith village is in a better position to advocate for new housing than it was in the past.

Community Safety

Crime

According to Cumbria Constabulary Hartside District which includes Culgaith, Blencarn, Skirwith and Melmerby and Ousby had 12.9 crimes per 1000 population in 2011, compared with a district average of 39.8 and a Cumbria average of 54.6. Hartside ward was ranked 26th of the 30 wards in the District, and ranked 158th of the 168 wards in the county for total crime per thousand. So a safe place to live. Some respondents had been affected by crime in the past year.

Crime in last year	
Burglary	4
Robbed/attack in the street	1
Obscene phone calls	1
Being insulted/pestered in the street	2
Vandalism	3
Car stolen	4
Quad bike stolen	1
Threatened by youths	5
Encounters with poachers	2
Encounters with hare coursing	4
Other	3

50% were satisfied with the police response but 50% were not. The most common reason for dissatisfaction was a feeling that police were not interested.

Priority issues for the area were more police patrols through the villages. Also action on anti-social behaviour and vandalism, youths speeding on mopeds and motor bikes, poachers, and drivers using mobile phones.

Neighbourhood Watch

Over 61% of respondents had not heard of the Cumbria Community Messaging Service run by Cumbria Constabulary.

When it came to the Neighbourhood Watch Scheme most people either were not part of the Scheme or did not know if they were. A number of people expressed an interest in learning more about it.

	Part of Scheme?	Want to Join?
Yes	24	60
No	116	43
Don't know	37	52

24 out of 29 people involved with farming were satisfied with Farm Watch. The main improvements identified were a faster response required and more proactive action to stop farm and livestock thefts.

Business

The business survey was completed by around 50 businesses. As in 2004 the two main sectors are agriculture and tourism.

Business Sector	Total
Agriculture and forestry	14
Fishing	1
Garden Centre/Nursery	1
Manufacturing	1
Builders and skilled trades	7
Holiday accommodation &/or catering	9
Business and professional services i.e. IT, finance, printing	7
Arts, Crafts, Design/creative industries	5
Education	1
Health and social work	4
Other	2

Employment needs in the future

Of the 50 responses to how do you see your employment needs in the future, 35 said staying roughly the same, 12 growing and 3 reducing.

Barriers to achieving plans

Lack of suitable skilled local staff and lack of finance topped the list of barriers with 10 responses each. Broadband with 6 responses was another major issue. Lack of public transport had 4 responses, lack of suitable business premises 3, lack of affordable housing 2 and lack of suitable training 1.

Other barriers identified included the cost of fuel, lack of recycling for businesses including green waste, climate change and poor weather, red tape and planning. Another issue raised was the emphasis on the Lake District to the detriment of the Eden Valley in the tourism sector.

Solutions to the barriers

High speed broadband as soon as possible was the main request. Better liaison with the Tourist Information Centre. Reduction in the cost of fuel in rural areas and the gritting of minor roads.

Introduction to the Action Plan

How the action plan was developed

Results of all the consultations were analysed and used to develop a first draft of the Action Plan. Copies were circulated to Cumbria County Council, Eden District Council, Cumbria Rural Housing Trust, ACT Action for Communities and Cumbria Association of Local Councils to see if the identified actions fitted within their corporate priorities.

The findings of the consultation and the draft action plan were presented to the local communities through public forums in Blencarn, Culgaith and Skirwith. The feedback from the meetings affirmed the actions and identified some new ones which were built into the final action plan.

Delivering and monitoring the action plan

The Action Plan sets out the Issues, the action, the priority, the lead body, the partners and the timescale. These will be added to as and when new issues are identified. At its meeting in January 2013 Culgaith Parish Council agreed to monitor progress on a regular basis and through an annual monitoring review.

Action Plan Table 2013 - 2017

No	The Issue	The Action	Priority	Lead Body	Partners	Time scale
ACTION PLAN						
AP1	Action Plan	Forums to be arranged in Culgaith Blencarn and Skirwith to discuss draft Action Plan and ensure all issues have been documented	H	Steering Group		Late 2012
AP2	Action Plan	Work with existing groups & encourage new groups to take the initiatives forward	H	Parish Council	Local Community Groups	Late 2012
AP3	Distribution	Distribute a Summary Action Plan to each household	H	Steering Group		Early 2013
AP4	Distribution	Make the results of the survey plus Action Plan available on village website	H	Steering Group	Website developer	Early 2013
AP5	Distribution	Distribute Action Plan to EDC, ACT, and Cumbria CC	H	Steering Group	ACT Eden District Council Cumbria County Council	Early 2013
AP6	Adoption & review	Present Action Plan to Culgaith Parish Council for adoption & annual review.	H	Steering Group	Parish Council	Early 2013
TRANSPORT AND ACCESS						
TR1	Transport	Promote Voluntary Car Scheme and Rural Wheels through website and Notice Boards	M	Parish Council	Cumbria County Council	
TR2	Timetables	Work with other local parish councils to distribute Fellrunner timetables through the area.	M	Parish Council	Parish Councils – Langwathby, Ousby, Hunsonby, Glassonby The Fellrunner	2013
TR3	Winter gritting	Continue to work with Cumbria Highways to ensure adequate gritting along the East Fellside	H	Parish Council	Cumbria Highways	Duration of plan
TR4	HGVs	Work with Cumbria Highways to reinforce signage about The Pea in Culgaith being unsuitable for HGVs	M	Parish Council	Cumbria Highways	2013
TR5	Speeding	Continue to work with police to monitor speeding	M	Parish Council	Cumbria Constabulary	Duration of plan
TR6	Potholes	Collate all the information collected through the survey and report problems to Cumbria Highways	H	Parish Council	Cumbria Highways	Early 2013
TR7	Potholes	Promote the Highways Hotline website and phone number to report faults, potholes through website and Notice Boards.	M	Parish Council	Cumbria Highways	Mid 2013
TR8	Other traffic issues	Collate all the information collected through the survey on flooding, dirty roads etc. and report problems to Cumbria Highways	L	Parish Council	Cumbria Highways	Early 2013
TR9	Skirwith Beck	Work with Environment Agency to improve the flow in Skirwith Beck	M	Parish Council	Environment Agency	2013
TR 10	Blencarn	Identify potential parking sites at Blencarn for tourists/walkers	M	Parish Council		Duration of plan
COMMUNITY COHESION AND INVOLVEMENT						
CC1	Village Halls	Continue to financially support village halls and community groups as and when required	M	Parish Council	Culgaith Victoria Institute, Kirkland & Blencarn Recreation Rooms, Skirwith Village Hall, VIC	Duration of plan
CC2	Village Halls	Work with Village Hall Committees to identify new activities.	M	Parish Council	Culgaith Victoria Institute, Kirkland & Blencarn Recreation Rooms, Skirwith Village Hall	Early 2013
CC3	Play Areas	Work with Play Committees to improve play areas	M	Parish Council	Culgaith Recreation Ground, Kirkland & Blencarn Recreation Rooms, Skirwith Play Committee	Early 2013
CC4	Information	Continue to financially support and promote the Memo and village website	M	Parish Council		Duration of plan

No	The Issue	The Action	Priority	Lead Body	Partners	Time scale
CC5	Local Facilities	Promote and encourage use of local services i.e. mobile PO van and mobile library through the Notice Boards and website	L	Parish Council	Royal Mail Cumbria CC Library Service	Duration of plan
EDUCATION AND LIFE LONG LEARNING						
ED1	School	Continue to support the Culgaith School and its activities as the hub of the Community	M	Parish Council	Culgaith School	Duration of plan
ED2	School	Provide School Governors with the feedback from the survey	M	Steering Group		Early 2013
CULTURE AND LEISURE						
CL1	Feedback	Provide feedback to village halls on activities identified through the survey e.g. cinemas, quiz nights etc.	M	Steering Group	Culgaith Victoria Institute Kirkland & Blencarn Recreation Rooms Skirwith Village Hall	Early 2013
CL2	Youth Club	Support the development of Youth Clubs and other activities for young people	H	Young Cumbria		Duration of plan
ECONOMIC WELL BEING						
EW1	Broadband	Continue to work with the East of Eden Fellside Broadband Group and Cumbria County Council to improve broadband to the parish	H	Parish Council	East of Eden Fellside Broadband Group Cumbria County Council	Duration of plan
HEALTH AND SOCIAL WELL BEING						
HS1	Local provision	Work with local GPs and PCTs to bring outreach services such as flu jabs at village halls	M	Parish Council	Temple Sowerby GP Surgery Penrith GP Surgeries	2014
HS2	Healthy lifestyles	Promote the exercise classes that already exist at Langwathby and Melmerby through website and Notice Boards.	L	Parish Council	Local Education Authority	Duration of plan
HS3	Healthy lifestyles	Encourage village halls to introduce new classes such as Yoga, Taichi, Keep Fit and Zumba perhaps through initial taster sessions	L	Parish Council	Culgaith Victoria Institute Kirkland & Blencarn Recreation Rooms Skirwith Village Hall	2013
ENVIRONMENT						
EN1	Village Greens	Consult Skirwith community about the future maintenance of the village green to identify a way forward.	H	Parish Council		Late 2012
EN2	Village Greens	Continue to financially support management of the Tarn Village green	M	Parish Council	Guardians of Culgaith Tarn	Duration of plan
EN3	Footpaths	Work with Countryside Ranger to improve the styles around Blencarn and the footpath to Tickleberry Lonning Down FP 320022	M	Parish Council	Countryside Ranger	2013
EN4	Footpaths	Work with Countryside Ranger to improve the footpath through Hag Wood Culgaith	M	Parish Council	Countryside Ranger	Duration of plan
EN5	Footpaths	Consider how to improve the overgrown and muddy footpaths across the parish through the development of community footpath groups	L	Parish Council		
EN6	Verges and hedges	Work with Cumbria Highways and local landowners to find ways of dealing with damaged verges and overgrown hedges	M	Parish Council	Cumbria County Council	Duration of plan
EN7	Recycling	Work with Eden District Council or other partners for garden waste collection in Skirwith, Blencarn and Kirkland	H	Parish Council	Eden District Council	Duration of plan
EN8	Heating	Consult households with a view to setting up a bulk purchase scheme for oil	M	Steering Group	Ousby Oil Syndicate Scheme	Duration of plan
EN9	Red Squirrels	Support the Penrith and Red Squirrel Preservation Scheme	M	Parish Council	Village Halls, Culgaith School	Duration of plan

No	The Issue	The Action	Priority	Lead Body	Partners	Time scale
EN10	Litter Pick	Encourage local community groups to organise seasonal litter picks	M	Parish Council	Culgaith Victoria Institute Kirkland & Blencarn Recreation Rooms Sikirwith Village Hall VIC Community Café Eden District Council	Duration of plan
EN11	Wildlife areas	Continue to support the management of the Tarn	L	Parish Council	Guardians of Culgaith Tarn	Duration of plan
EN12	Walking Groups	Continue to promote and support the Walking for Health Project	L	Parish Council		Duration of plan
EN13	Allotments	Identify sites for allotments and or community gardens	L	Parish Council		2013
EN14	Dog Fouling	Increase awareness of the dog control orders in all the villages and on play areas	M	Parish Council	Community Warden	2013
EN15	Renewable energy	Investigate renewable energy schemes particularly solar, photovoltaic and geothermal for both individuals and the community	L	Parish Council		Duration of plan
HOUSING						
HO1	Affordable Housing	Work with Housing Associations to develop affordable housing in Culgaith village	M	Parish Council	Local Housing Associations Cumbria Rural Housing Trust Community Land Trusts	Duration of plan
HO2	Development	Work with Eden District Council to identify potential sites for housing which are in keeping with the villages	L	Parish Council	Eden District Council	Duration of plan
COMMUNITY SAFETY						
CS1	Crime	Publicise the National Crime website through the Parish website	L	Parish Council		Late 2013
CS2	Neighbourhood Watch Scheme	Encourage current organisers to promote and extend the Neighbourhood Watch Scheme	L	Parish Council		Duration of plan
CS3	Business Watch	Publicise Farm Watch and Business Watch through the Parish website	L	Steering Group		Late 2013
CS4	Community concerns	Provide Cumbria Constabulary with feedback from survey	M	Steering Group	Cumbria Constabulary	Early 2013
CS5	Community information	Publicise the Cumbria Community Messaging Service	M	Parish Council	Cumbria Community Messaging Service	Mid 2013
BUSINESS						
BS1	Business Group	Talk with a few business people to identify common issues e.g. Broadband and develop future areas of co-operation	H	Steering Group		Late 2012
BS1	Business Group	Invite representatives from local businesses to develop ideas further	H	Steering Group		Late 2012
BS3	Research	Continue to research other rural initiatives	M	Business Group		Duration of plan
BS4	Links to Community Plans	Investigate the business initiatives identified in the Heart of Eden Community Led Plan	L	Business Group		2013
BS5	Tourism	Work with Eden District Council Tourist Information Centre to promote tourism in the parish	M	Business Group		2013

Appendix

TIMELINE OF THE COMMUNITY ACTION PLAN

2011

July Culgaith Parish Council agrees to update Parish Plan 2004-2009

September Steering Group formed representing all 3 villages and different organisations

October – December Initial Meeting with ACT and Eden District Council.

2012

January Local Community Groups contacted about issues that are important to them. Plan promoted through the Memo Newsletter.

January – March Feedback from local groups and Culgaith School plus analysis of 2003 survey used to develop questionnaire. Update on progress in Memo Newsletter.

April Community led Plan promoted at Annual Parish Meeting and feedback collected from members of the Community. Invitation for young people to get involved promoted through the Memo.

May Surveys distributed by hand and later in month collected. Option to complete online promoted through parish website and Memo Newsletter. Response rate of 54%.

June Views of younger members of the community sought at the Blencarn Jubilee and the Culgaith Celebrations. Community Plan promoted in the Parish Council Annual Report distributed to every household.

July – August Analysis of the questionnaires

September Initial findings reported through the Memo Newsletter

August – October First draft of Action Plan prepared and circulated to ACT, Eden District Council, Cumbria County Council and CALC

November/December Findings reported back through village forums in Culgaith, Blencarn and Skirwith. First draft of Action Plan

2013

January Final draft of action plan agreed

February Summary of Action Plan distributed to every household

2013-2017

Annual review of Action Plan